



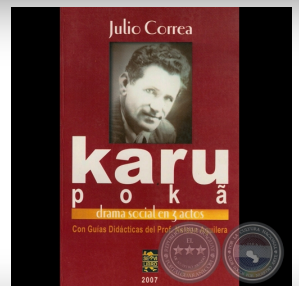
**PORTAL**  
**GUARANI**

[www.portalguarani.com](http://www.portalguarani.com)

**JULIO  
CORREA**

**30 de Agosto de 1890**

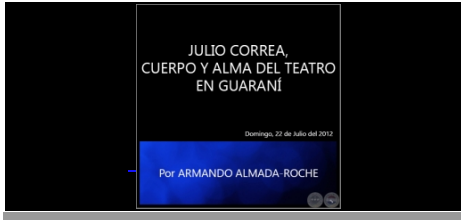
Ver Perfil Completo 



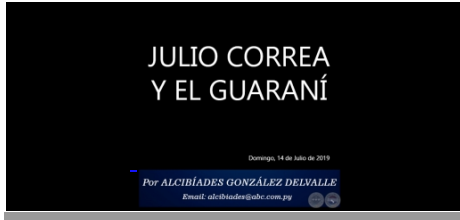
## **Cantidad de Obras Registradas: 19**

Para Acceder a cada Obra, por favor haga click en la imagen.

[JULIO CORREA, CUERPO Y AL...](#)



[JULIO CORREA Y EL GUARANÍ...](#)



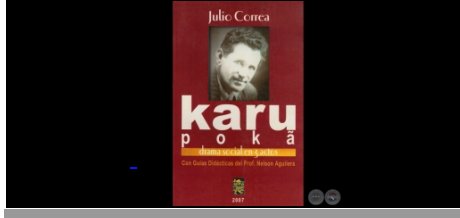
[LEGADO VIGENTE, PERO OLVI...](#)



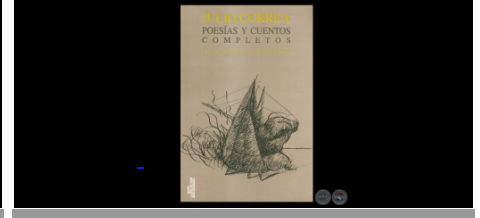
[SANDIA YVYGUY, 2012 - Obr...](#)



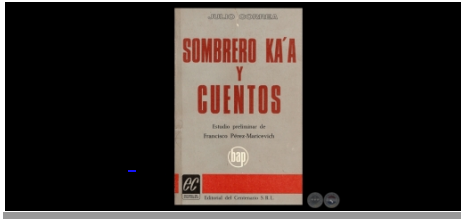
[KARU POKĀ – DRAMA SOCIAL ...](#)



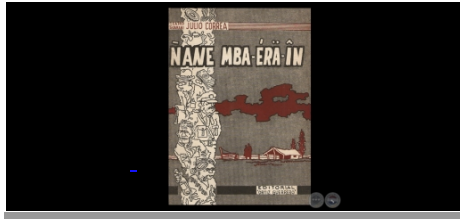
[JULIO CORREA. POESÍAS Y C...](#)



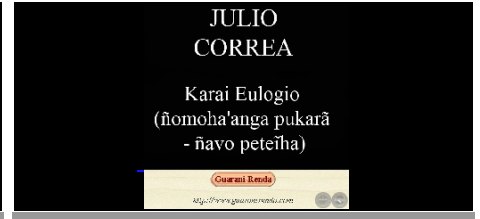
[SOMBRERO KA'A Y CUENTOS....](#)



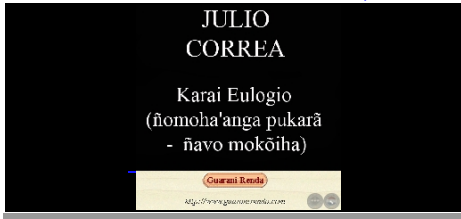
[ÑANE MBA? ERA? ÑIN...](#)



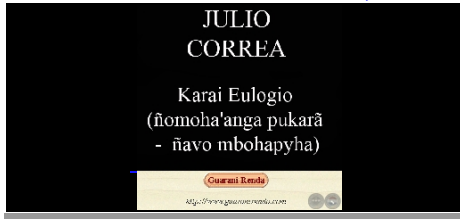
[KARAI EULOGIO - Teatro, P...](#)



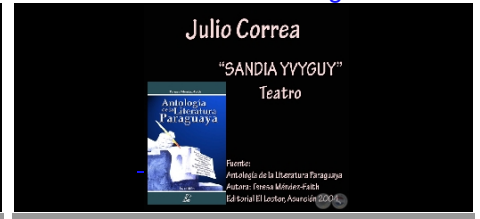
[KARAI EULOGIO - Teatro, S...](#)



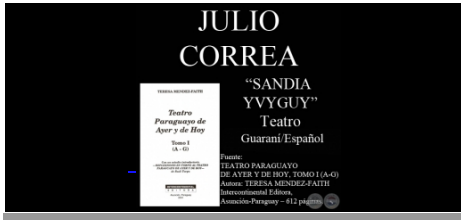
[KARAI EULOGIO - Teatro, T...](#)



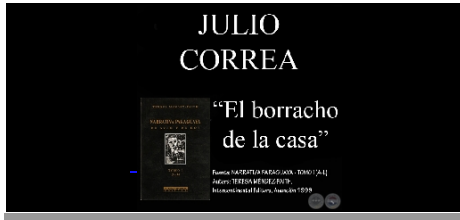
[SANDIA YVYGUY - Fragmento...](#)



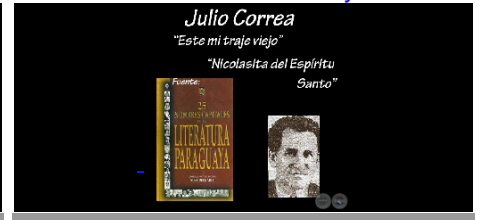
[SANDIA YVYGUY - Obra teat...](#)



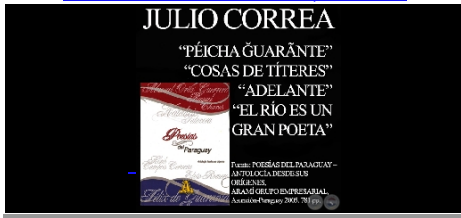
[EL BORRACHO DE LA CASA - ...](#)



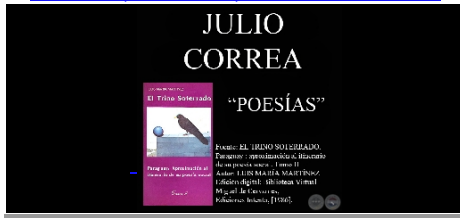
[ESTE MI TRAJE VIEJO y NIC...](#)



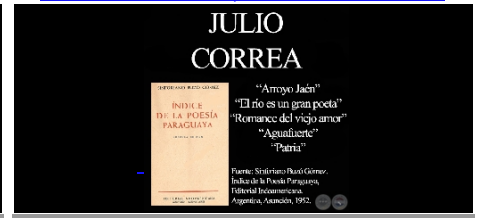
[PÉICHA ?UARĀNTE, COS...](#)



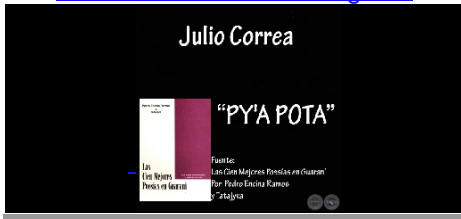
[PARTO, MADRE, NO CANTÉIS ...](#)



[ARROYO JAÉN, EL RÍO ES UN...](#)



[PY'A POTĀ - Poesía en gua...](#)



**Ingresar al Perfil Completo en PortalGuarani.com** ➤

**Portal Guarani © 2023**

Oficina: Asunción Super Centro - Gral. Díaz entre 14 de Mayo y 15 de Agosto - Local 372, 2do. Piso

TeleFax.: 451-486 - Contacto: [info@portalguarani.com](mailto:info@portalguarani.com)

PortalGuarani.com se enorgullece ser el proveedor oficial de informaciones e imágenes del Paraguay para **Wikipedia.org**

Asunción - Paraguay - Proyecto Desarrollado por **Gustavo Lezcano**